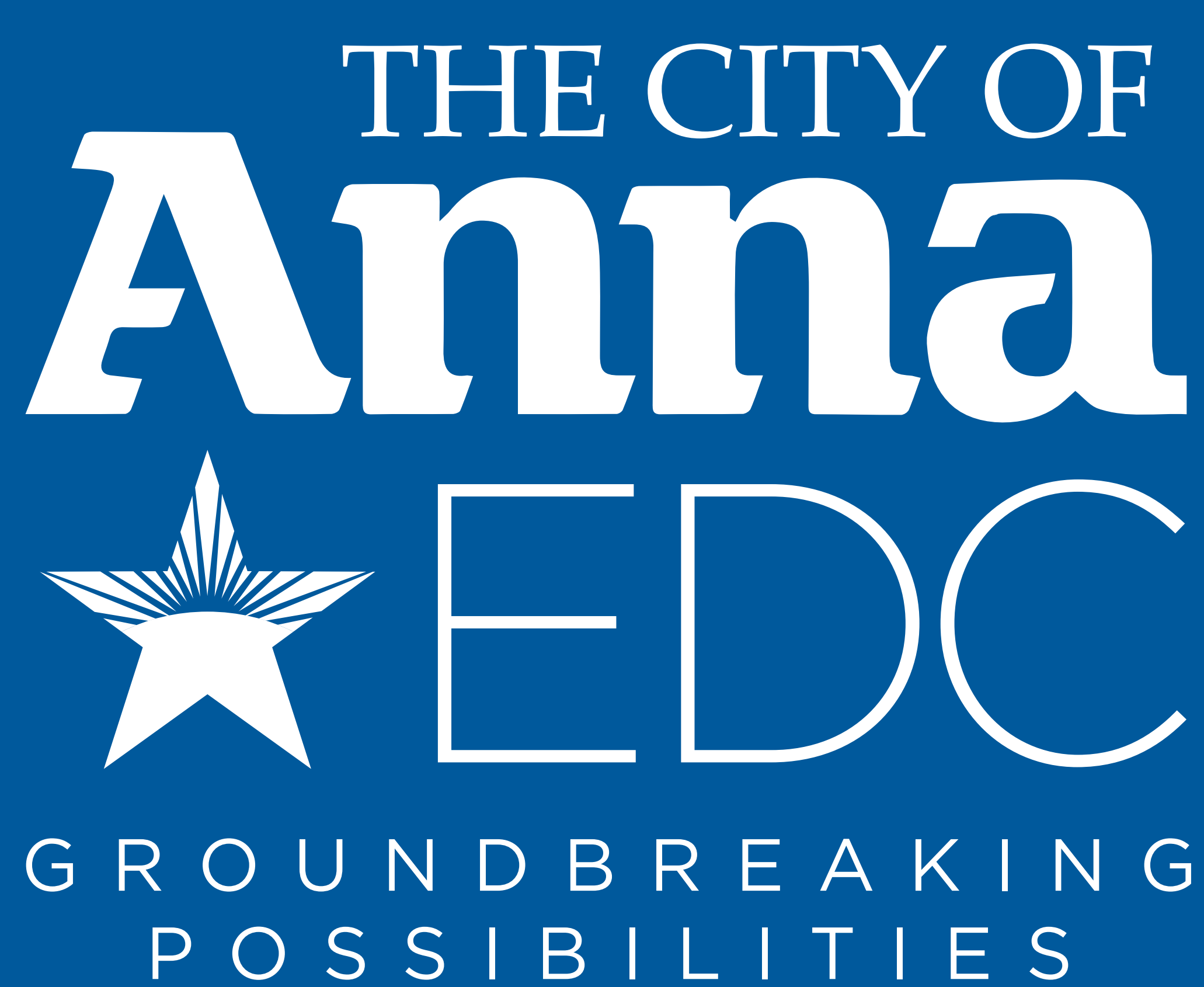


Have a **booming** population?



As part of the third
fastest-growing county in the U.S.,
Anna's population is expected to
exceed 50,000 by 2030. Anna has
grown by 186% since 2010.

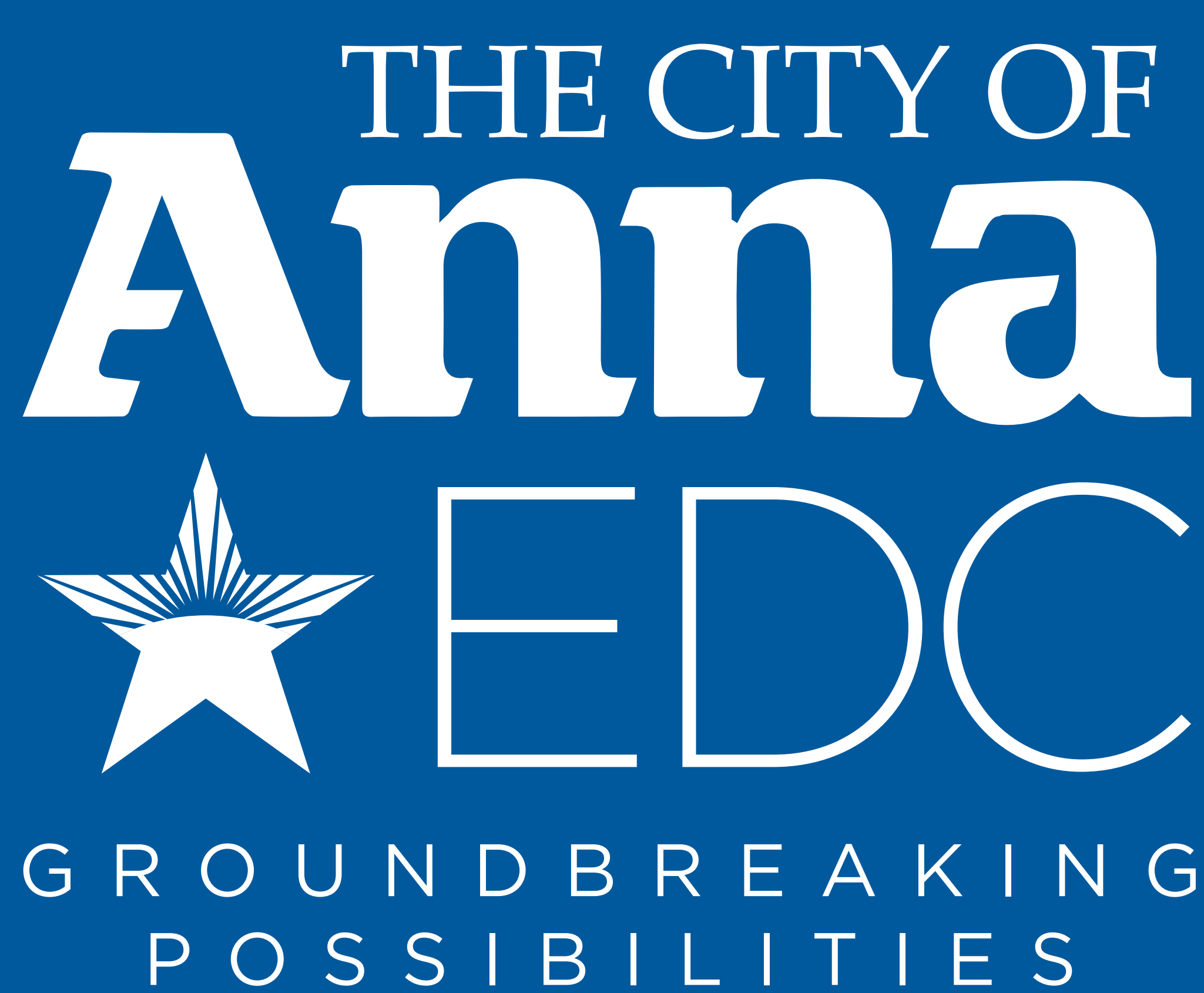


OpportunityAnnaTx.com

Have an **ideal** location?



Located at the intersection of five major highways between Dallas and Sherman's rising tech hub in Grayson County, Anna is comprised of 61 square miles and offers a wealth of available development sites throughout the city.

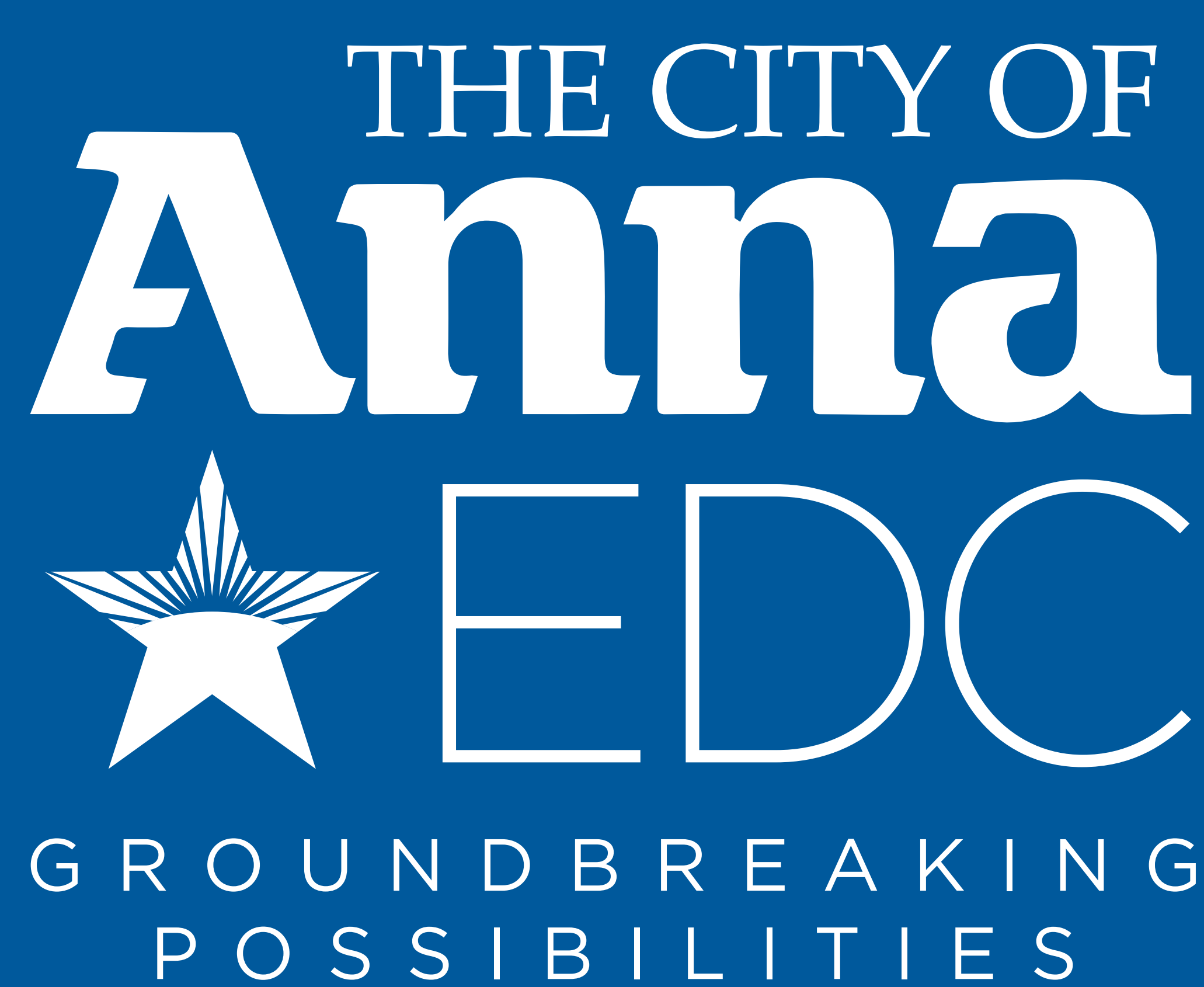


OpportunityAnnaTx.com

Have a pro-business mindset?



In Anna, we understand that speed to market is everything. Our pro-business culture sets the stage with a streamlined permitting process.



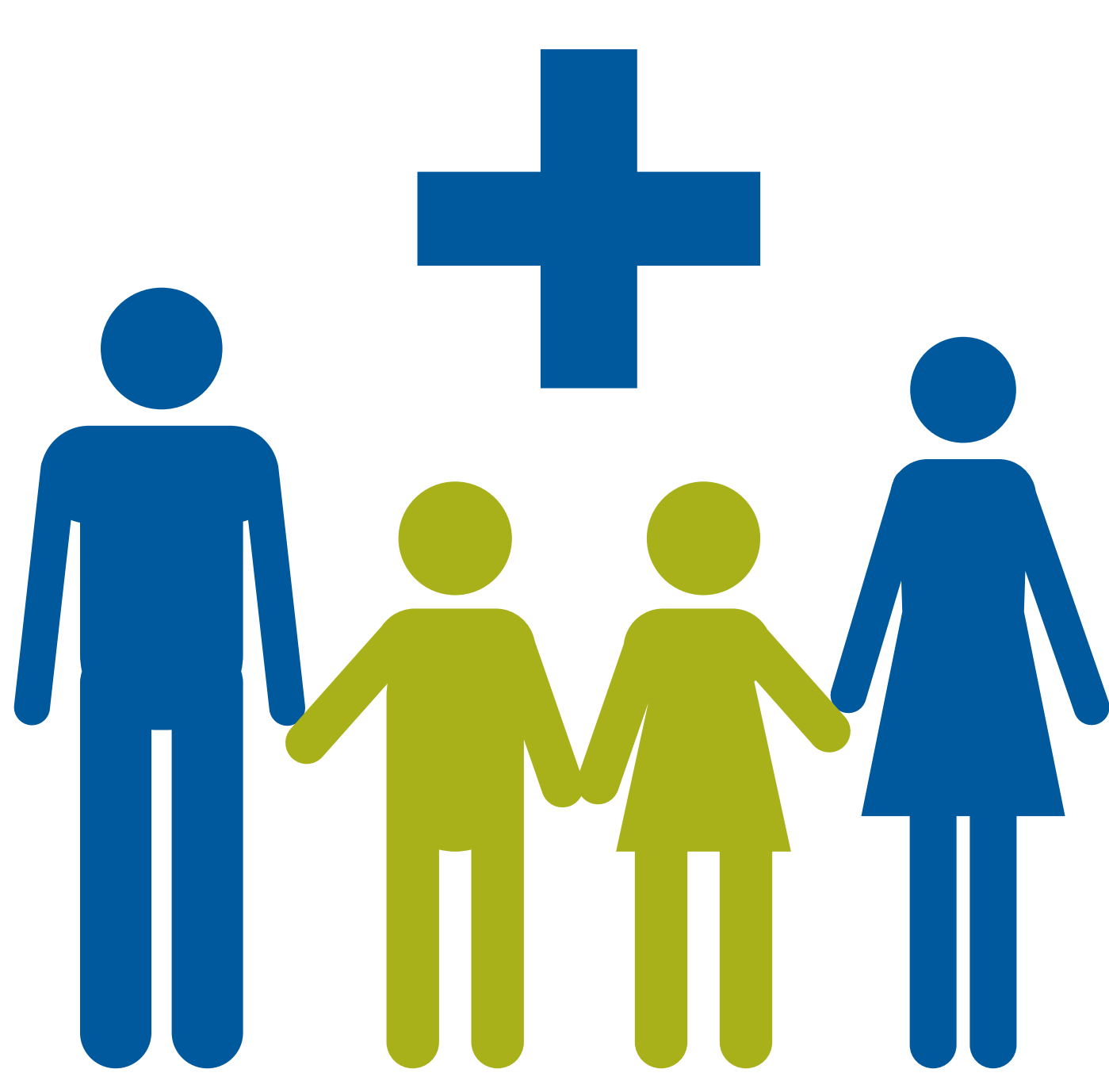
OpportunityAnnaTx.com

TOP
3

**COLLIN COUNTY
RANKED AS THIRD**
fastest-growing county
in the U.S.



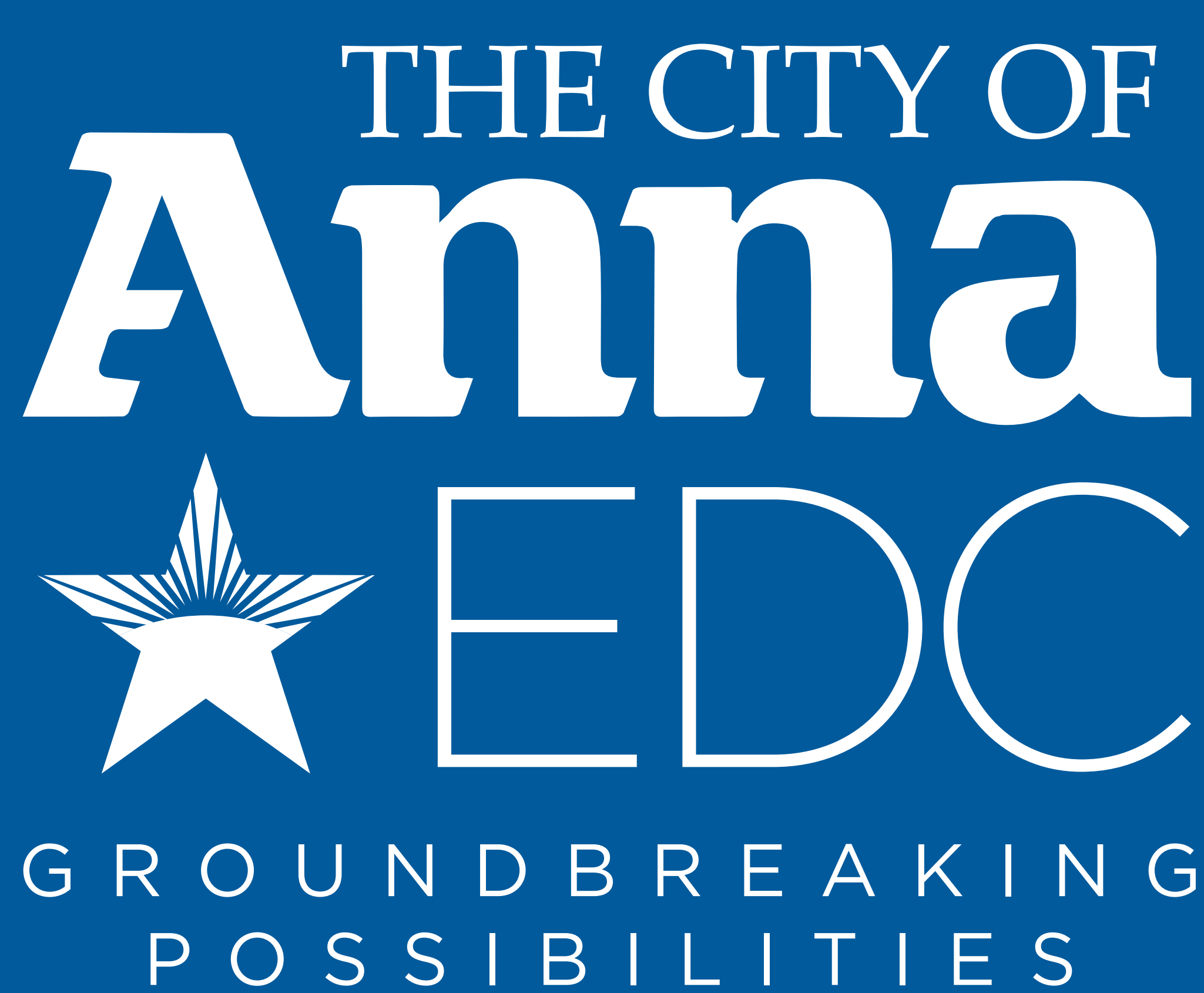
4,500 NEW MULTIFAMILY
units projected over
the next five years



**12,500 NEW SINGLE-FAMILY
HOUSEHOLDS**
estimated in the
Anna Trade Area over
the next five years

TOP
10

**ANNA RANKED
AS ONE OF 10**
fastest-growing cities
in North Texas for
five consecutive years



OpportunityAnnaTx.com