

# Yacht Support Vessel Build Options



SHADOW  CAT



Naval Architect: Incat Crowther  
 Exterior Designer: Shadow Cat  
 Interior Designer: Richard Halberg / Shadow Cat  
 Shipyard: Astilleros Armon  
 Project Management: YCTS

Length Overall: 66.20 m  
 Length Waterline: 64.80 m  
 Beam: 14.00 m  
 Draft Hull: 2.3 m  
 Depth: 5.45 m  
 Special Personnel: 20  
 Deck Area: 659 sqm  
 Fuel: 160 000 litres  
 Fresh Water: 20 000 litres  
 Grey Water: 16 750 litres  
 Black Water: 3 200 litres

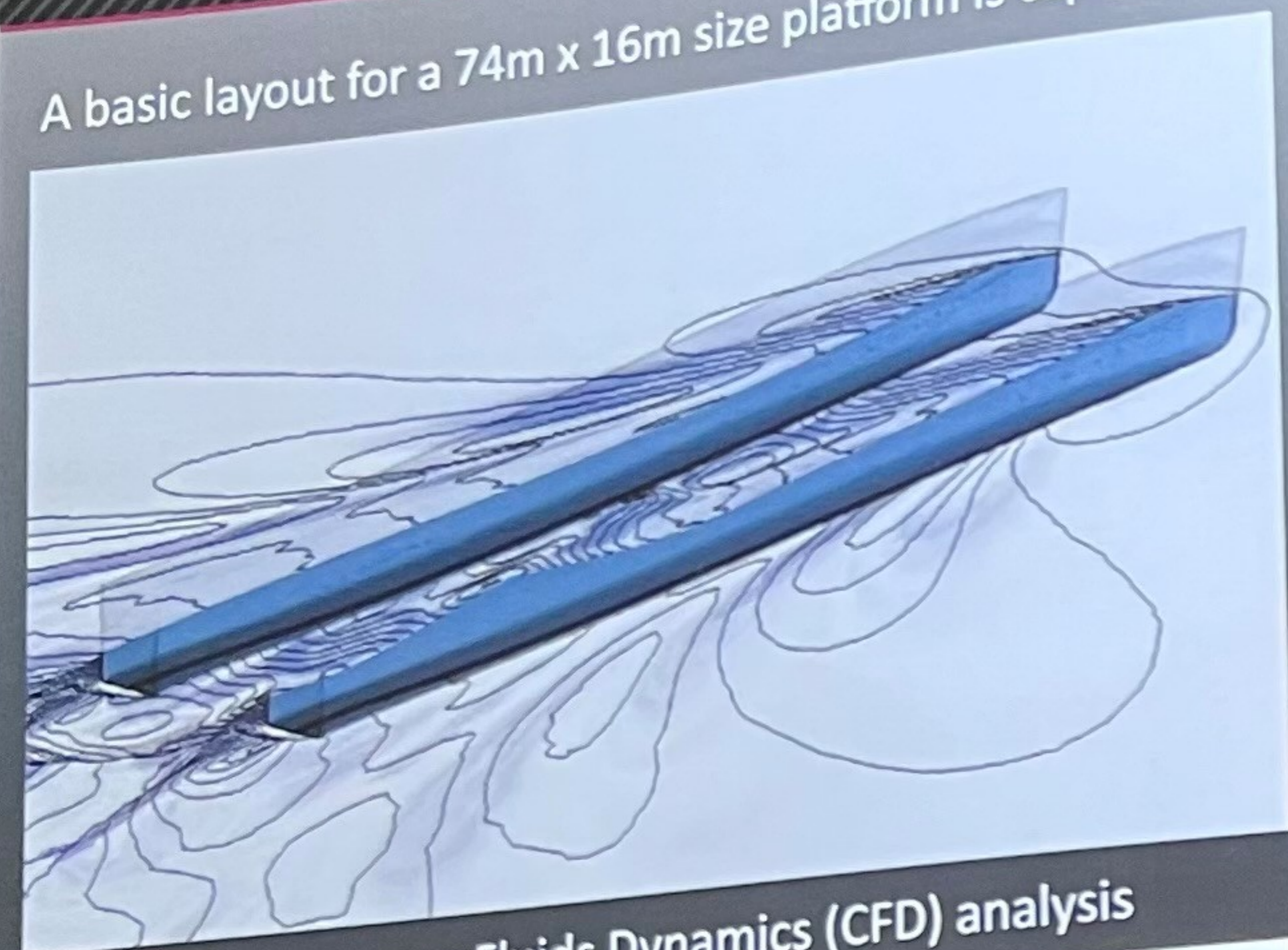
Service Speed: 21 knots  
 Maximum Speed: 22.5 knots  
 Range: 5 500 nm @ 14 knots  
 Main Engines: 2 x MTU 16V 4000 M73L SCR  
 Installed Power: 2 x 2 880 kW at 2,050 rpm  
 Propulsion: 2 x Servogear controllable pitch propeller  
 Generators: 2 x CAT C9.3  
 Construction Material: Marine Grade Aluminium



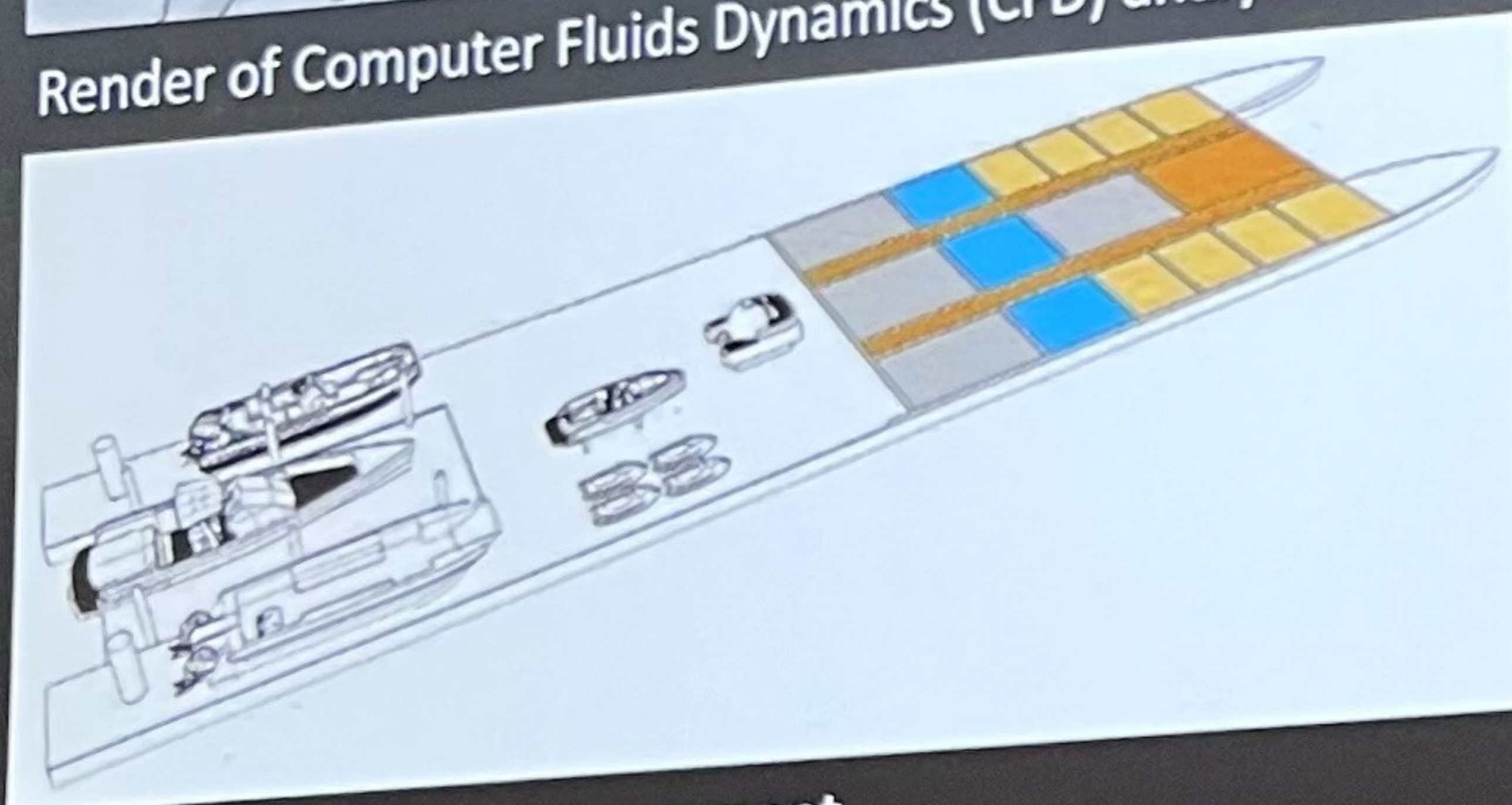
2019 SHADOW CAT SUPPORT VESSEL BUILD

# Catamaran Features

A basic layout for a 74m x 16m size platform is capable to offer the following particulars and features:



Render of Computer Fluids Dynamics (CFD) analysis



Main Deck concept arrangement

- Gross tonnage approx 1800GT
- Speed = 22knt (max) , 18knt (cruise)
- 2 Main Engines
- Draft = 3.5m to propeller tip
- Range = 5500nm at 14knt or 4000nm at 16knt with approximately 200,000L of fuel
- Accommodation ≤ 28 (18 Crew and 10 Staff)
- Huge external deck area up to 700m<sup>2</sup>
- Deck Cranes up to 11t @ 6m
- Heli Deck D value = 16m (max take off weight 7t)
- Tenders up to 17 meters long

# SHADOW CAT Shadow Vessel Flexibility

The flexibility and unparalleled storage capability allows for a variety of support possibilities:

- Sport fishing gear storage and vessels
- Scuba diving equipment and decompression
- Submersibles
- Safe Helicopter operations, hangar and support
- Pilot cabin space
- Tenders and water sport vessels
- ATV's, motorbikes, and car/truck transport
- Owner lounge and beach areas
- Owner, Staff and VIP suites
- Spa and wellness facilities
- Cigar room
- Gaming space
- Basketball, Volleyball, and Pickleball courts
- Urban farm for self-sustaining fresh produce
- Gym facilities
- Shop space for repairs
- Sonar lab for underwater exploration
- Hiking, Rock climbing gear storage
- Surfboards, windsurfing equipment storage



Plentiful storage plus Lift Platform for quick deployment



Deck space for multiple vessel types with Heli Pad

# SHADOW CAT

[WWW.THESHADOWCAT.COM](http://WWW.THESHADOWCAT.COM)



No information or images herein may be reproduced in any format without the written permission of ShadowCat, YCTS, Incat Crowther or Armon