



LAUREL VALLEY GOLF CLUB



ACCOMMODATIONS

LAUREL VALLEY
GOLF CLUB



“The most natural, beautiful site I’ve ever seen for a golf course.”

– GOLF ARCHITECT DICK WILSON



LAUREL VALLEY GOLF CLUB

It was always a sporting place. In the old days, men strode the gentle, verdant valley, shotguns nestled in the crooks of their arms, stalking grouse and pheasant. By the 1950s, business leaders sought to create the right golf club for their own special retreat. They wanted good golf, but they wanted more: to relax, to be with friends, to entertain clients, to get away.

Hiring renowned golf architect Dick Wilson, they broke ground in June, 1958, and opened the following summer. With golf legend Arnold Palmer guiding the club, Laurel Valley became nationally ranked, attracting the PGA Championship, the Ryder Cup Match, and others.

The Champions play here because Laurel Valley constantly seeks to improve itself. Through continued refinements by Arnold Palmer's firm, the goal is the continued pursuit of the finest, most challenging, most satisfying golf in the nation.



NATURE'S BOUNTY

Set in Western Pennsylvania's breath-taking Laurel Highlands, nestled on 260 glorious acres between Laurel Ridge Mountain and Chestnut Ridge Mountain, Laurel Valley is an ideal golf club—A course of unmatched strength and impeccable beauty whose intricate challenges are matched only by the timeless setting. The perfect place to play, Laurel Valley enjoys nature's bounty, crisp, bright springs, the lush foliage of summer and an autumn splendor hailed by naturalists the world over.

Respecting the majesty of the surroundings, Laurel Valley's facilities are designed to be simple yet classic Georgian. Adjacent to the Clubhouse and the Arnold Palmer Pavilion, the new Guest Cottages are stately red brick with traditional black shutters, the large windows adding a timeless feel while bathing each air-conditioned Cottage with the sparkling light of the Laurel Valley.

From the Cottage's French doors an unforgettable vista greets guests every morning; the rolling hills of Laurel Valley. Later, as the sun gently sets over the wooded hills, guests walk out on their flagstone porches for a spectacular view—or just a breath of night air.





THE COTTAGES

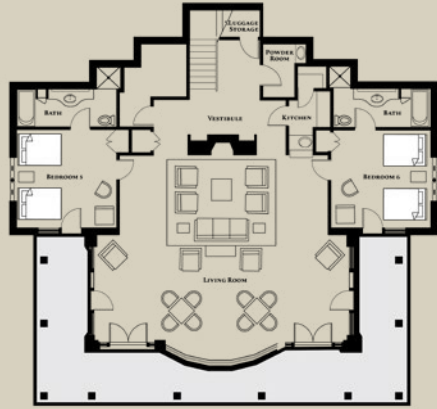
Perfect as a quiet hideaway, or for refined entertaining, two six-bedroom Guest Cottages now complement one of the region's most prestigious golf clubs. For a private suite, a private party, or just one of those glorious long weekends of great golf and good friends, the graciousness of fine golf club living is available at Laurel Valley Golf Club.

The six bedrooms bespeak dignity and luxury. Four tastefully decorated bedrooms have two double beds, with wall-to-wall carpeting and tasteful furnishings. For maximum privacy, as well as comfort, each bedroom has its own fully equipped bath with a vanity, bathtub, and separate shower stall.

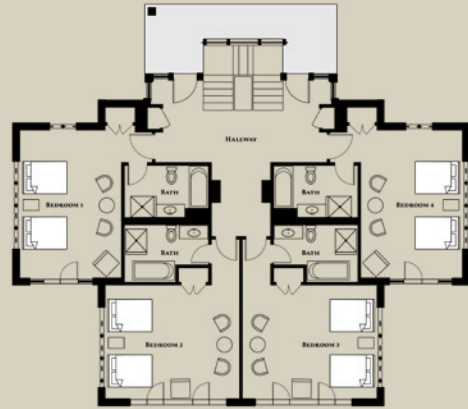
On the first floor, the living room was designed to be the focal point for entertaining or relaxing, with comfortable seating, card tables, color TV, large stone fireplace, and a wet bar. Two King bedrooms adjoin the living room. Outside, the wrap-around flagstone veranda, with rockers, takes full advantage of the magnificent grounds.



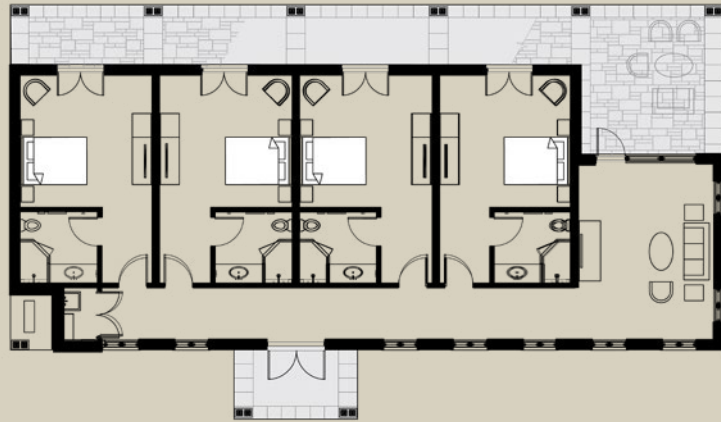
LAUREL VALLEY COTTAGE FLOOR PLANS



GROUND FLOOR



FIRST FLOOR



COTTAGES OVERLOOKING THE DRIVING RANGE



ACCOMMODATIONS & AMENITIES

At Laurel Valley, quality does not end at the Cottage door. To begin with, a variety of fine dining experiences, all featuring the exquisite Laurel Valley cuisine, and the justly renowned lunch buffet, are available in various settings, from intimate to larger groups.

<i>Conference Room</i>	<i>8</i>
<i>Laurel Lounge</i>	<i>16</i>
<i>Arnold Palmer Dining Room</i>	<i>24</i>
<i>Fairless Dining Room</i>	<i>88</i>
<i>Love Dining Room</i>	<i>100</i>

At Laurel Valley, we specialize in flexible accommodations for members and guests.

<i>2 Six-Bedroom Guest Cottages</i>
<i>1 Two-Bedroom Guest Cottage</i>
<i>6 Four-Bedroom Guest Cottages</i>
<i>8 Clubhouse Laurel Suites</i>
<i>8 Palmer Pavilion Suites</i>
<i>18 Clubhouse Dorm Rooms</i>

To anticipate every member need, there is also a full pro shop, stocked with the finest fashions—and the latest golf clubs. A fully equipped men's locker room is nearby.

Finally, for those hours when business intrudes, there are meeting room facilities.

Indeed, Laurel Valley Golf Club is the ideal setting—cloistered and quiet, pristine and picture perfect—where members and guests can get down to business and pleasure.



LAUREL SUITE



***“Success in golf depends less on strength of body
than upon strength of mind and character.”***

– ARNOLD PALMER





LAUREL VALLEY GOLF CLUB

